



ZAMEEN  
QUADRANGLE

THE NEW SHAPE OF  
YOUR HOME



A PROJECT BY  
**ZAMEEN**  
DEVELOPMENTS





THE DAWN OF A  
**NEW** HORIZON

Actual View of Lahore Gym Khana Golf Club









Operating within the MENA, South Asia, and Southeast Asia regions, Emerging Markets Property Group (EMPG) owns and operates classifieds portals. With the aim to align buyer insights with developer goals, the group employs data analytics and comprehensive studies for relevant real estate trends.

After merging with the OLX Group in Pakistan, Egypt, UAE, and Lebanon, EMPG earned the 'Unicorn' (valued at USD 1 billion+) status. The group plans to develop a myriad of new services to generate seamless user experiences, enhance data transparency, and deepen market intelligence for both consumers and business users.

Companies working under the group include Zameen.com & Zameen Developments in Pakistan, Bayut in UAE, Saudi Arabia, & Jordan, Bproperty in Bangladesh, Kaidee in Thailand, Mubawab in Morocco & Tunisia, and Lamudi in Philippines & Mexico.

The group's unique ability to scale using its proprietary tech has aided and enabled this expansion. Furthermore, it continues the journey towards providing solutions in multiple markets around the world, expanding its classifieds offering significantly.

Presence in **18 Countries**

---

**5,000+** Employees

---

**\$ 1 Billion+** Valuation (Unicorn Company)

---

**200 Million+** Group Monthly Traffic

---

**2.2 Billion** Yearly Sessions

---

**420 Million** Leads Generated

---

**1.4 Billion+** Global Consumers

---

Serving **18%** of World Population





Pakistan's Largest Tech-enabled  
Real Estate Company

---

Presence in over **34 Cities**

---

**3,000+** Employees

---

Marketing **150+** Real Estate Projects  
across Pakistan

---

**500+** Strong Tech Team

---

Network of **25,000+** Real Estate  
Agencies

---

**19+** Property Expos

---

**30 Million+** Property Listings

---

**5.7 Million+** Monthly Website Visitors

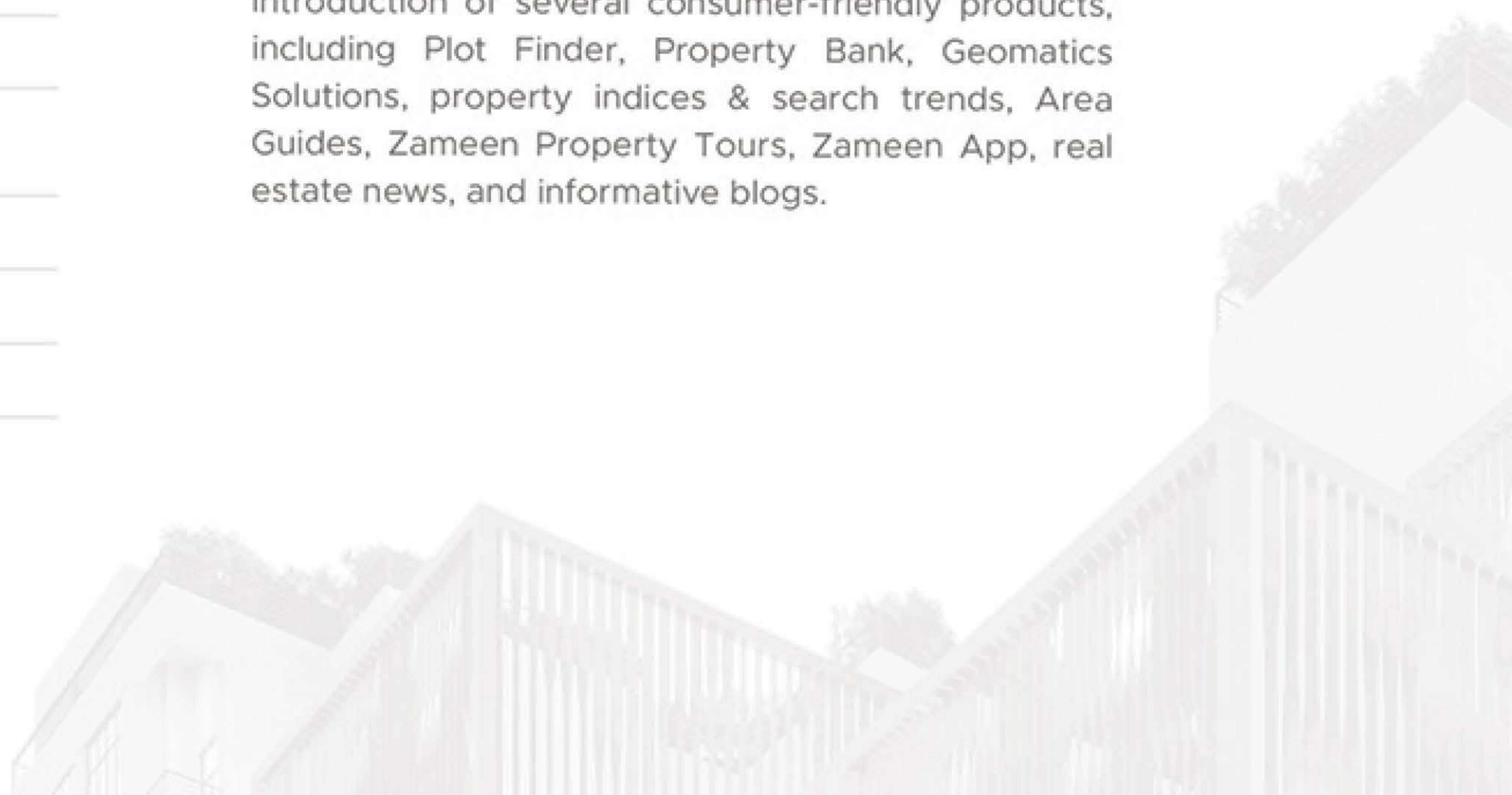
---

**2.5 Million+** Subscribed Members

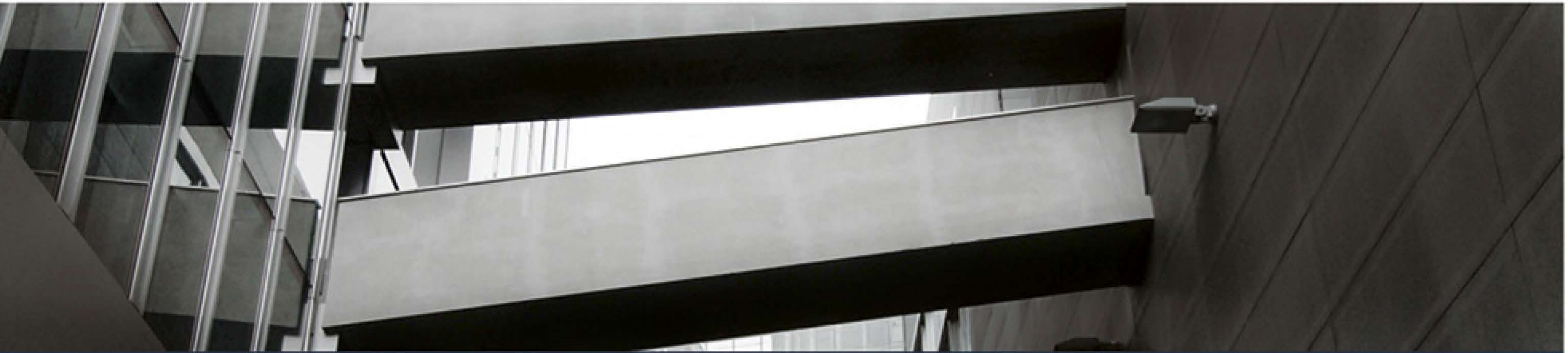
Launched in 2006, Zameen.com started as the largest property portal of Pakistan. The platform soon became one of the most reputed and recognised establishments within the country's real estate sector as it developed an affiliates' network and started marketing & sales services. Today, it ranks among the top 5 property portals of the world.

The portal provides a user-friendly interface to connect property buyers with sellers as well as tenants with landlords. A holistic marketing approach allows Zameen.com to meet developer goals and buyer demands, along with guaranteeing a transparent experience.

Furthermore, the company leads the market by introduction of several consumer-friendly products, including Plot Finder, Property Bank, Geomatics Solutions, property indices & search trends, Area Guides, Zameen Property Tours, Zameen App, real estate news, and informative blogs.







# ZAMEEN DEVELOPMENTS

Building upon EMPG's credibility and transparency, two of the most significant aspects of property development, we at Zameen Developments envision bringing a sweeping change in the real estate development sector of Pakistan.

Upholding the principles of trust and integrity, we create value for our customers, investors, and partners alike. We believe in timely delivery of projects while adhering to all relevant quality standards, and the commitment to offering our clients the lifestyle they desire.

Whether it is project scope, location/site, market demands, consumer requirements, or any of the various elements of development, decisions are based on valuable data received from the feedback and experience of Zameen.com's exclusive sales team working across the country and a vast network of real estate agencies, along with latest property search trends, buying preferences, and indices.

EMPG's Property Development Arm

---

**5 On-ground** Projects worth PKR 36 Billion+

---

**2,000+** Happy Customers

---

A Multidisciplinary Team of **150+** Professionals

---

On Course to becoming **Pakistan's Largest** Vertical Projects Developer





# DESIGNS

by ZAMEEN  
DEVELOPMENTS

A Full-service Architecture & Design  
Studio

---

In Practice **since 2018**

---

End-to-End Architecture & Design  
Consultancy Services

---

**250+** Projects Designed

---

**10 Million+ Sft** Covered Area Designed

---

Signature Designer for All Zameen  
Developments' Projects

With a strong belief in the transformative power of design, our aim is to change how people think about architecture and design — offering a new perception of spaces we inhabit daily.

Our dedicated architects, engineers, interior experts, graphic designers, MEP specialists, visualisation & production experts, and various other professionals design unique commercial and residential projects — primarily vertical developments — in major cities across the country.

The skill of our in-house team is evident from the exceptional designing of all projects launched by Zameen Developments. We have the knowledge and training to overcome any challenge and deliver quality solutions to complicated problems. With continued learning, we aim to keep expanding our expertise and impact.

Combining our team's diverse skills and understanding of the clients' and market demands, we deliver solutions rooted in purpose — with the capacity to bring breakthroughs within the industry.





  
ZAMEEN  
QUADRANGLE





## *The New Shape of Your Home*

Zameen Quadrangle is the result of thorough research and conceptualisation. Breaking the common trends, the project redefines contemporary architecture and community living. Optimised to offer everything required for a complete residential lifestyle, the vertical development promises the customer an experience like never before.



# ZAMEEN QUADRANGLE



📍 49, Zafar Ali Road, Gulberg, Lahore



# DISTINGUISHED **LOCATION**

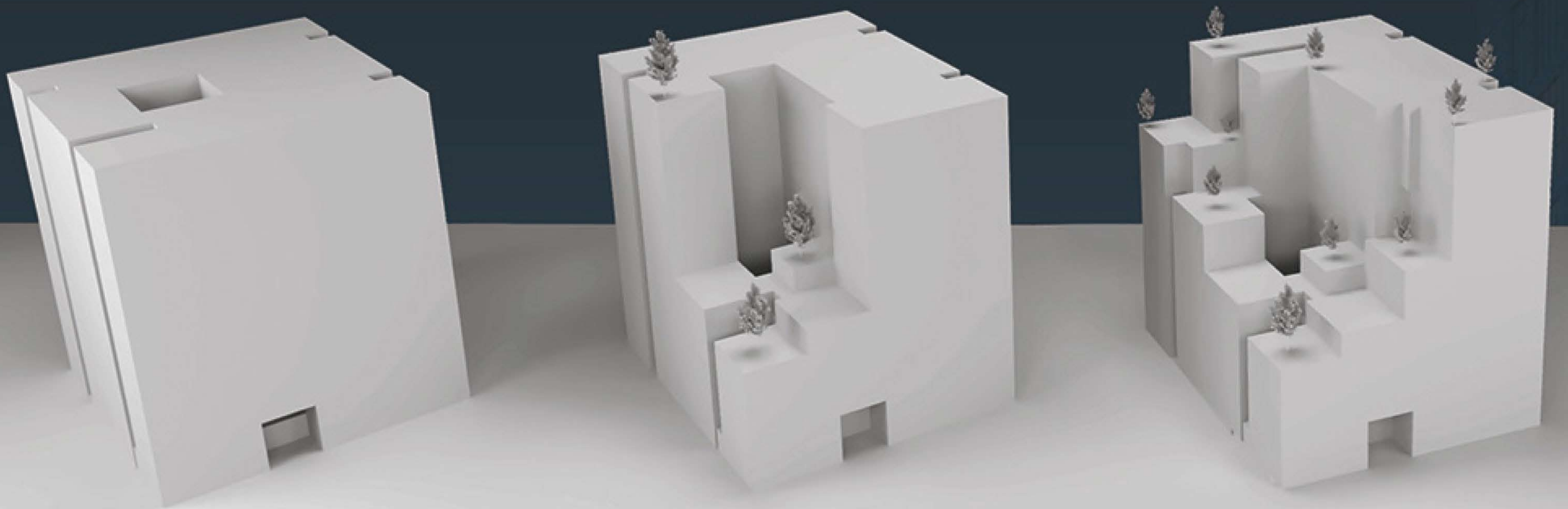
Situated on Zafar Ali Road, Gulberg, the heart of Lahore, Zameen Quadrangle offers a vibrant and fulfilling lifestyle to its residents with quick access to major avenues, including Main Boulevard Gulberg, Jail Road, Canal Bank Road, and Mall Road.





# DISTINCT GEOMETRICAL CONCEPT

Capitalising on the power of minimalism, the building features geometrical lines and modular floor plans — with the stepped form of the structure highlighted as it goes higher. An optimised four-sided elevation helps implement simple strategies to make living comfortable, efficient, and ecologically aware for the residents.









# REDISCOVER COMMUNITY

In addition to offering stunning panoramic views of Lahore, Zameen Quadrangle promotes a community-centric lifestyle.

The building's design supports healthy family living and social interaction. To deliver this idea, residents have been provided a central courtyard, 'The Quad'. Beautifully landscaped, the courtyard offers refreshing views, natural light, and ventilation to the inward-facing apartments. Allowing the people to come together, 'The Quad' encourages social interactions in a comfortable and secure space.











## ARRAY OF RESIDENTIAL **APARTMENTS**

Customers will have the choice to select from a wide range of residential units, including 1-bed, 2-bed, and 3-bed apartments, along with exclusive penthouses. Each apartment enjoys its very own view regardless of its orientation. All residential units offer a simple ambience yet an efficient lifestyle for the residents.









# EXCLUSIVE PENTHOUSE LIVING

Zameen Quadrangle truly signifies a high-end penthouse lifestyle. Immaculately designed, these units have their own distinct features. To provide an exclusive experience to residents, the penthouses have separate swimming pools as well as other convenient facilities. Moreover, you will enjoy the most breath-taking views of Lahore's skyline.





## SCANDINAVIAN INTERIORS

To complement the overall minimalistic concept, the interiors have been inspired from a Scandinavian theme. An abundance of green spaces and views balance the muted design elements used across the different spaces in the building — creating a sense of tranquillity for the residents.



# LINEAR SIMPLICITY

The facade maintains the concept of minimalism and features a geometrical structure. In addition to the highlighted linearity, the facade has been kept fair-faced to capture the simplicity and elegance of the concrete texture.







ZAMEEN  
QUADRANGLE



Outdoor Cinema

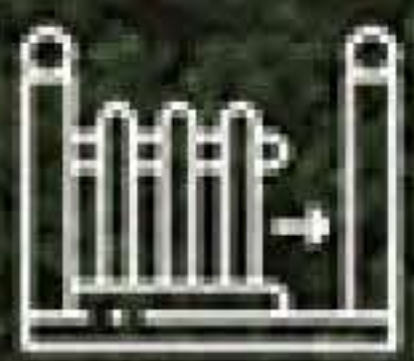
# COMPREHENSIVE AMENITIES & FACILITIES



Spa & Sauna



24/7 Security & Surveillance



Secure Gated Community



Lounge & Café



Designated Parking



Electricity Backup



Kids' Play Area



Swimming Pool



Gymnasium



Outdoor Seating Area





Landscaped Terrace

Fitness Area

Outdoor Sitting

Bonfire Terrace

BBQ Terrace

## RECREATION SPACES

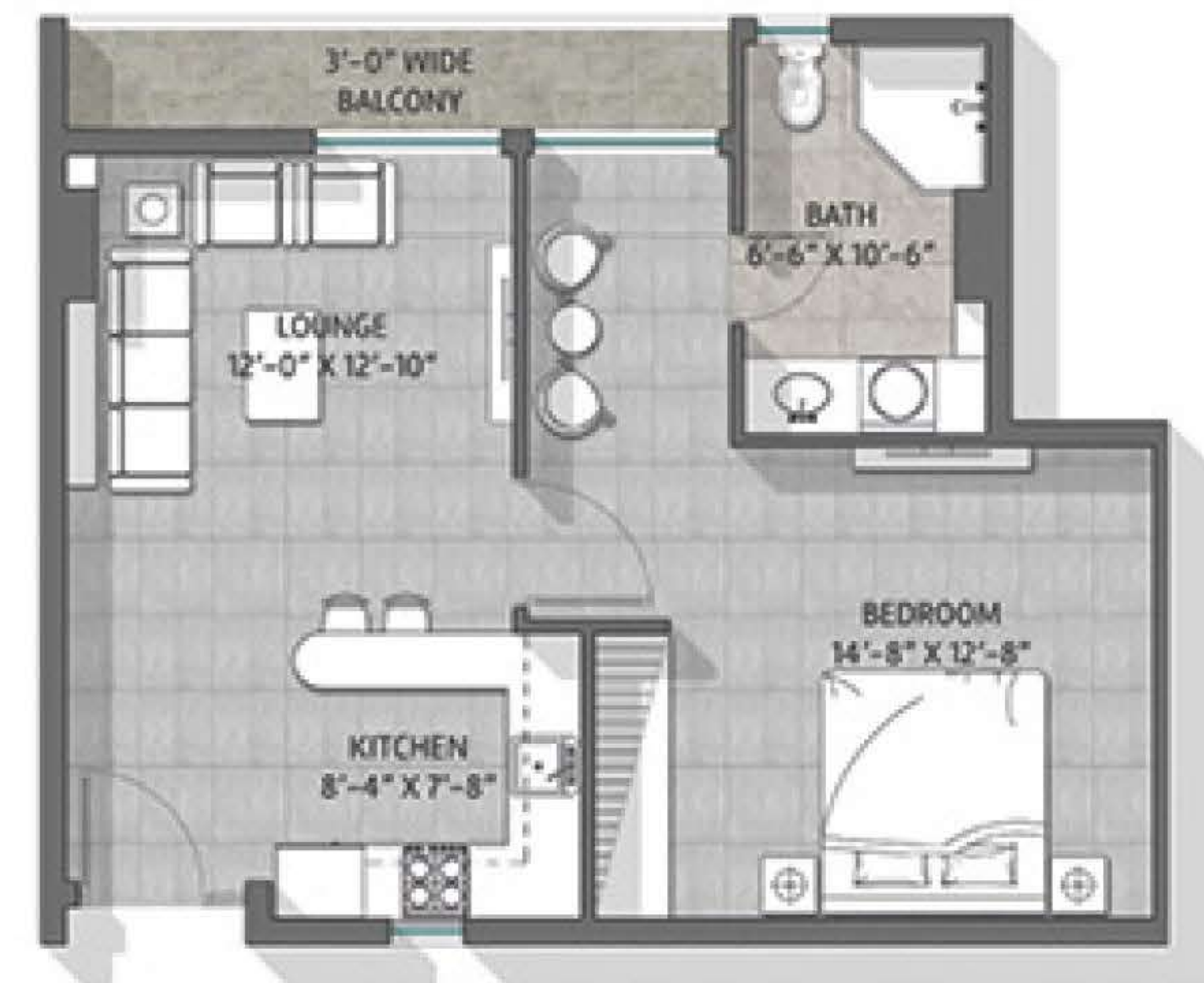
While 'The Quad' remains integral to the design concept of the project, community terraces have been included to complement it. Residents will be able to enjoy multiple facilities in these social activity spaces. The terraces offer a BBQ Area to spend quality time with friends & family, a Fitness Area to keep track of your health, and a Kids' Play Area to provide fun opportunities to your little ones.



# 1-BED APARTMENT

## 691 Sft

A. BEDROOM	14' - 8" X 12' - 8"
B. BATH	6' - 6" X 10' - 6"
C. BALCONY	3' - 0" WIDE
D. KITCHEN	8' - 4" X 7' - 8"
E. LOUNGE	12' - 0" X 12' - 10"





# 2-BED APARTMENT

## 938 Sft



A. BEDROOM 1	11' - 0" X 12' - 6"
B. BATH	5' - 6" X 10' - 4"
C. BALCONY	3' - 1 1/2" WIDE
D. BEDROOM 2	11' - 0" X 13' - 10"
E. BATH	5' - 6" X 9' - 2"
F. BALCONY	4' - 0" WIDE
G. LOUNGE	10' - 6" X 14' - 6"
H. KITCHEN	6' - 0" X 8' - 8"
I. BALCONY	4' - 0" WIDE





# 2-BED APARTMENT

## 1,108 Sft

A. BEDROOM 1	13' - 2" X 16' - 6"
B. BATH	5' - 6" X 10' - 4"
C. BALCONY	3' - 6" WIDE
D. BEDROOM 2	11' - 0" X 16' - 6"
E. BATH	5' - 0" X 12' - 4.5"
F. BALCONY	3' - 10" WIDE
G. LOUNGE	11' - 0" X 13' - 6"
H. KITCHEN	6' - 8" X 11' - 0"





# 3-BED APARTMENT



## 1,305 Sft

A. BEDROOM 1	16' - 9" X 11' - 8 1/2"
B. BATH	6' - 6" X 11' - 10"
C. CLOSET	6' - 6" X 6' - 9"
D. BEDROOM 2	11' - 0" X 11' - 10"
E. BATH	6' - 6" X 7' - 0"
F. BEDROOM 3	13' - 4" X 13' - 10"
G. BATH	10' - 8" X 5' - 6"
H. BALCONY	3' WIDE
I. KITCHEN	11' - 6" X 6' - 0"
J. LOUNGE	14' - 11" X 12' - 1 1/2"





# PENTHOUSE

2,932 Sft

A. BEDROOM 1	10' - 9" X 11' - 0"
B. BATH 1	11' - 1" X 5' - 0"
C. BEDROOM 2	12' - 9" X 10' - 8"
D. BATH 2	12' - 9" X 5' - 0"
E. BEDROOM 3	11' - 0" X 15' - 0"
F. BATH 3	5' - 10" X 12' - 0"
G. BALCONY	3' - 0" WIDE
H. BEDROOM 4	12' - 0" X 14' - 0"
I. BATH 4	5' - 0" X 11' - 0"
J. BALCONY	4' - 0" WIDE
K. SITTING	14' - 11" X 13' - 10"
L. KITCHEN	13' - 0" X 12' - 2"
M. LOUNGE + DINING	20' - 11" X 24' - 8"
N. LAUNDRY	11' - 8" X 8' - 4"
O. MAID ROOM	5' - 4" X 16' - 8"
P. MAID BATH	7' - 0" X 8' - 0"
Q. POWDER	4' - 3" X 6' - 0"









# A SOLID INVESTMENT

Approved by  
Lahore  
Development  
Authority  
(LDA)

High-Standard  
Construction by  
Zameen  
Developments

Premium  
Facilities  
& Unique  
Design

127%  
Increase  
in Demand of  
Apartments in  
Lahore between  
2018 & 2020

50%  
Increase  
in Average Price  
per Sft of  
Apartments in  
Lahore

7%  
Average  
Rental  
Yield of  
Apartments as of  
December 2020







ZAMEEN



A PROJECT BY  
**ZAMEEN**  
DEVELOPMENTS

FOR MORE INFORMATION & BOOKING  
CALL OR VISIT US TODAY

**SITE OFFICE**

49, ZAFAR ALI ROAD,  
GULBERG, LAHORE.

**24/7 SALES CENTRE**

PAK+92 42 111 333 333  
UAE +971 44 378 010

**BOOKING OFFICES**

**LAHORE**

Boulevard 64, Ghalib Rd, Block D1,  
Gulberg III, Lahore

**ISLAMABAD**

Din Pavilion Center, 3rd Floor, Jinnah Avenue,  
Blue Area, Islamabad

**KARACHI**

4th Floor, Nice Trade Orbit Building, Block 6,  
P.E.C.H.S, Main Shakra-e-Faisal, Karachi

**FAISALABAD**

1st Floor, Standard Chartered Building,  
Susan Road, Faisalabad

**RAWALPINDI**

Building # 71, Civic Centre,  
Bahria Town Phase IV, Rawalpindi

**MULTAN**

2nd Floor, Jalil Center, JS Bank Building,  
Abdali Road, Multan

**GUJRANWALA**

Al-Rehman Business Complex, Mumtaz Market,  
GT Road, Gujranwala

**PESHAWAR**

3rd Floor, Bhattani Plaza  
University Town, Peshawar

**SARGODHA**

1st Floor, Faysal Bank Building, Near 47 Pull,  
Faisalabad Road, Sargodha

**BAHAWALPUR**

Office #15 Liberty Square, Yazman Road,  
Fauji Basti Chowk, Bahawalpur

**HYDERABAD**

1st Floor, Front Portion Abdul Wali Arcade, Opposite  
Orient Mall, Main Auto Bahn Road, Hyderabad

**SAHIWAL**

House # 581 Fateh Sher Colony, Sahiwal

**QUETTA**

Office No.7, 1st floor, Mehmar Plaza, near nosh Jan  
Marriage hall, Pishin stop,model town, Quetta

**DUBAI**

Office A-308, Building No. 7, Dubai Design  
District (D3), Dubai, UAE